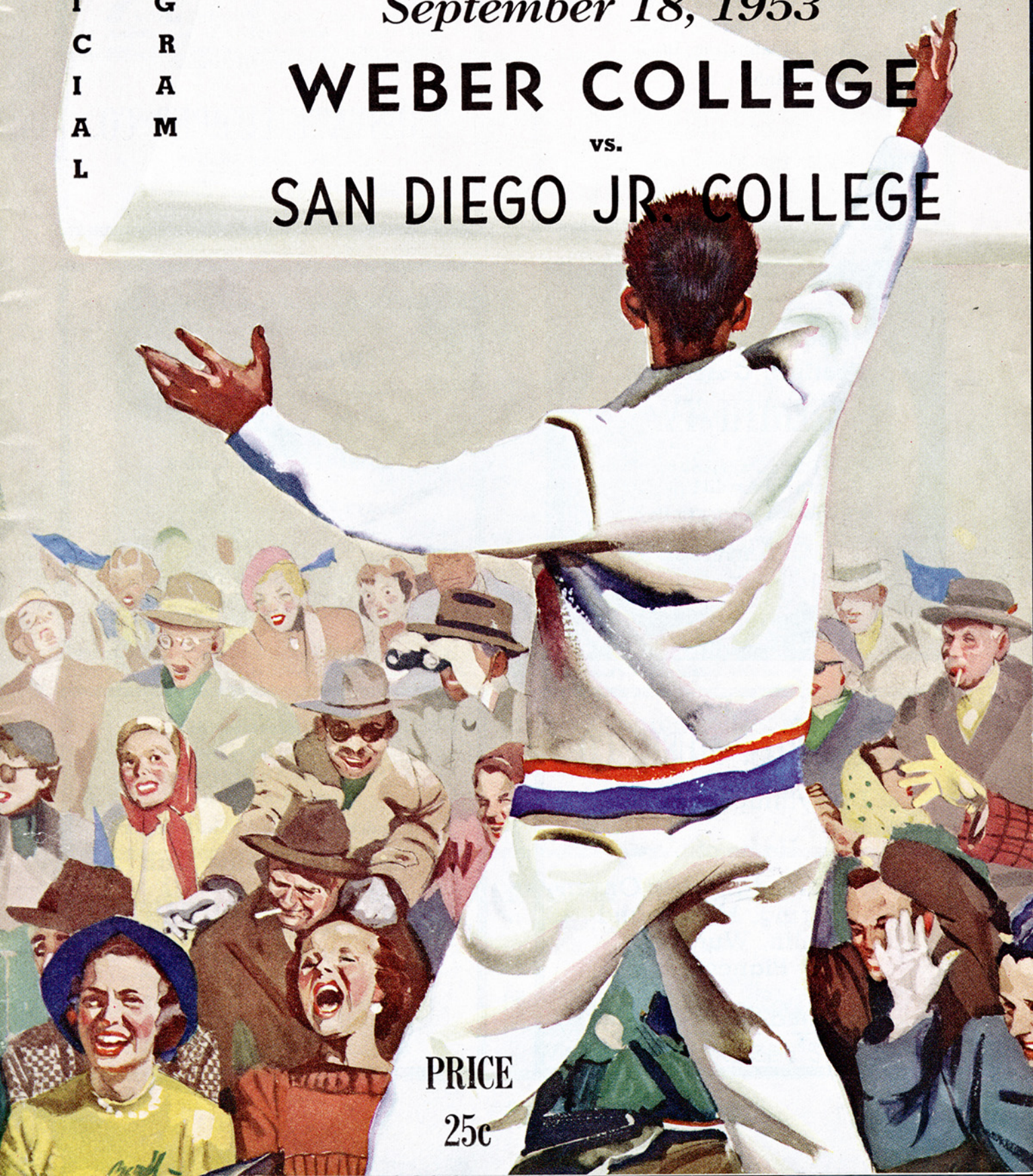


O  
F  
F  
I  
C  
I  
A  
L  
  
P  
R  
O  
G  
R  
A  
M

# WEBER COLLEGE Stadium Dedication

*September 18, 1953*

## WEBER COLLEGE vs. SAN DIEGO JR. COLLEGE



PRICE  
25c



*Say it with  
Flowers*

THE  
FLOWER SHOP  
of  
**ELIZABETH HUTH**

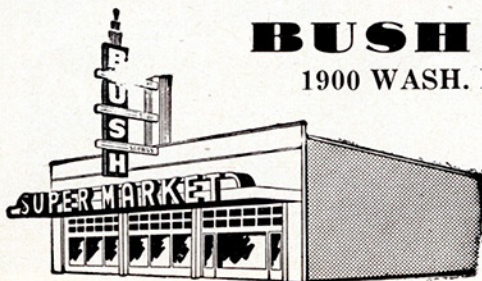
466 24th St.

OGDEN, UTAH

DIAL 6811



The OGDEN AREA is proud this Evening to Dedicate this new stadium for Weber College. This event marks a new era for Weber.



**BUSH SUPER MARKETS**

1900 WASH. BLVD.

26TH & QUINCY



We Give *S.N.* Green Stamps

Success to Weber

## SCRIVEN'S BOOK STORE

2478 WASHINGTON

## DAN'S GULF SERVICE

19TH AND WASHINGTON

OGDEN, UTAH

PHONE 3-0232

"We Grease to Please"

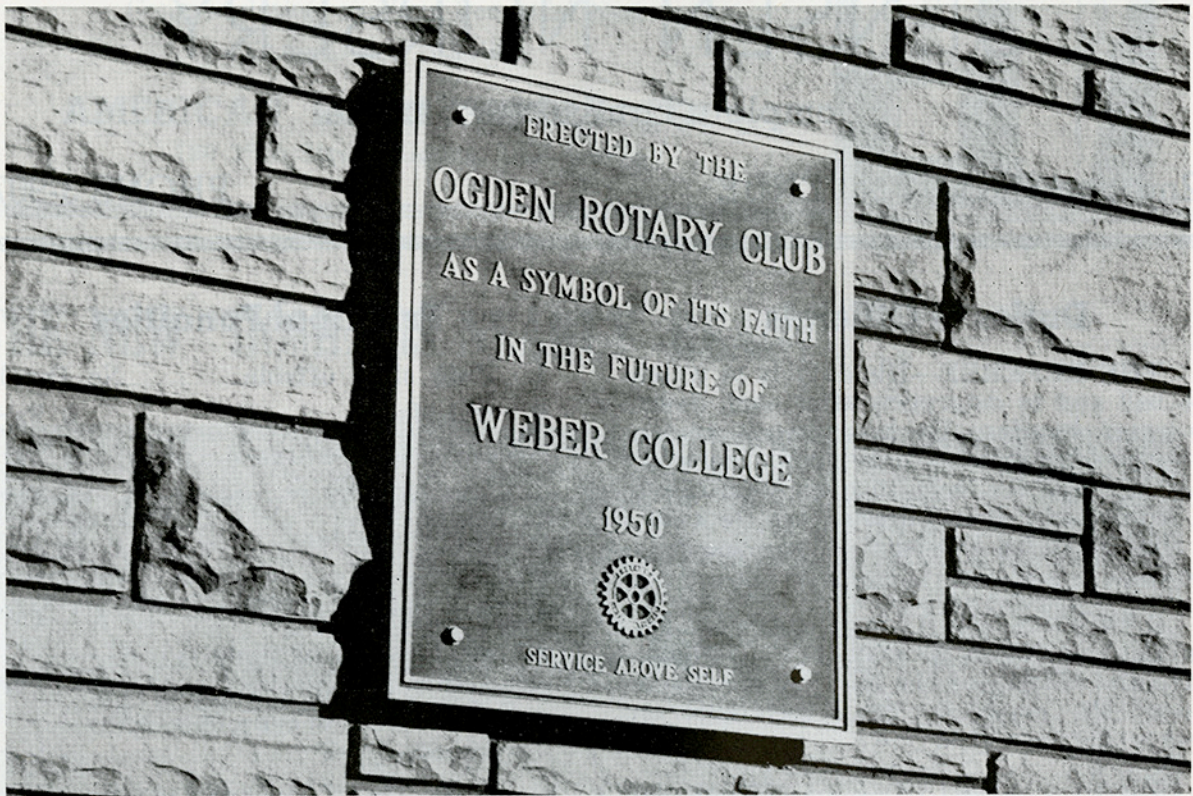
Within the next few months, Weber College will shift to its new home. This stadium dedication tonight marks the first step towards that goal.

The present building program had its real beginning in 1951—when the new campus was dedicated.



Townspople of Ogden gathered to witness the official dedication one year ago last March. State and Civic leaders were also present. The program culminated by Delmar Dickson (above) leading the group in "Hymn to Weber."

## ... "Faith in the Future of Weber College"



The Ogden Rotary Club erected a \$25,000 Memorial Entranceway to the new campus of Weber College. The club did this when there was nothing on the new campus site. For more than a year this beautiful Gateway stood like a King without a kingdom, but stood nevertheless, as a symbol of that clubs' "faith in the future of Weber College."

It is not about this gift specifically that we are concerning ourselves tonight. The Rotary Club has received much publicity from its generous gift and has been thanked officially by the college on several occasions.

It is the thought on the bronze plaque that causes a pensive mood. Before a brick had been laid, a foundation dug, or a batch of cement mixed, this club like numerous other groups demonstrated their faith in the growth and future of Weber with this gift.

Kiwanis, Child Culture Club, Porters and Waiters Club, Junior Chamber of Commerce, Quarterback Club, the Standard-Examiner and KLO, to name a few organizations who have made generous gifts, have likewise demonstrated their faith in the future of Weber College.

The list of individual donors is practically endless. During the drive in 1947 to raise funds for this new campus that we are met upon tonight, literally hundreds of working men, students, alumni, businessmen, and firms made contributions ranging from one to several hundred dollars.

All this, is a clear indication to the State that the people of this community have, as the Rotary Club plaque, simply but accurately notes, "Faith in the Future of Weber College."

## *Welcome . . . San Diego Team!*

We're happy to have you join us in the first football game in our new stadium.

### **WEBER COLLEGE STUDENT-BODY**

## Welcome to an "Old Grad" . . .

It is appropriate tonight in innovating the new Weber College stadium that we should welcome the new Weber College president, Dr. William P. Miller.

Dr. Miller is a graduate of Weber College, the class of 1926. He is a former Weber athlete himself, having played on the same team that Weber athletic "greats" Pete Couch and Monk Halliday did.

He comes to Weber College as president after having served in both the Ogden City and Weber County School Systems in an administrative capacity. For the past two years he has served the state as assistant superintendent of public instruction.

He is a native of Davis County, and he and Mrs. Miller have five very attractive daughters. He is being welcomed into the new post with the full support of the faculty and student body. Welcome home, President Miller.

### **ALL FORMS AUTO, TRUCK AND FIRE INSURANCE**

At a Saving to You

Farmers Insurance Exchange . . .  
Truck Insurance Exchange . . .  
Fire Insurance Exchange . . .

ALL POLICIES NON-ASSESSABLE

### **GLENN O. POLLADR**

District Manager

2614 Washington Blvd. Phone 3-5351

"Meet the Financial Responsibility Law—  
Insure With Us!"

### **WEBER**

**We Are With You!**

### **UTAH BOTTLING WORKS**

Manufacturers of

### **PURITY BEVERAGES**

Ogden, Utah

PHONE 9692

## FROM BARREN FIELDS . . . .



## A NEW CAMPUS BLOSSOMS . . .



Alfalfa fields, acres of weeds, and oak brush, were all that occupied the new 180-acre campus a few years ago, then the first construction got underway and Ogden watched with pride as the new campus began to take shape. Soon it will be more than just vacant, new, buildings and wide open spaces. Generations of young people will breathe a life and a spirit into the builders' works.

# WEBER COLLEGE NEEDS "SIDE-LINE" SUPPORT!



Weber College needs some support from the side-lines.

If the long range goals and aspirations of Weber College are ever to reach complete fruition the college will need some real support from its friends in the Ogden area.

Weber has been a part of this area since 1889 when it came into existence as the Weber Academy. It has grown and kept pace with the needs of the area it serves since that time. It has touched the lives of most of us here tonight in one way or another.

It is the cultural hub for Weber and surrounding counties, providing lecture series, community theatre plays, concerts, operas, concert series, symphony programs as well as an entertaining athletic program.

It educated many of our parents, tried to educate many of us, and will be a source of technical and academic knowledge for many of our children.

The role that Weber College has played through the years in the daily life of our community and ourselves demonstrates adequately that this is the institution we should support.

Anything that helps Weber grow, helps the Ogden area prosper.

At this stadium dedication is an appropriate time for all of us to renew our determination to support Weber College strongly from the side-lines.

The football players **not** pictured above . . . those who are on the field doing the scrapping for the college . . . would be the first to tell you that the kind of support, so graphically shown in the above photo, helps a lot.

Sometime it makes the difference between winning and losing.